

ZSB-550

Double Edge Folding Machine 折双边机

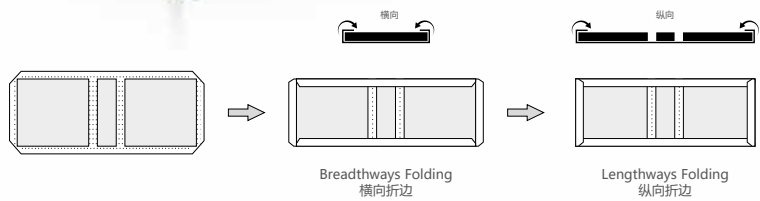
This machine is mainly used for product packing of book cover. Fold the laminated glued paper for right and left sides and then paste it tighter. 用于精装封面式产品包装，将已上胶的面纸与内衬纸板粘合，并将面纸左右两边同时包边并贴合。

MAIN FEATURES 性能特点

Frequency inverter stepless regulating
Automatic correction for the material feeding
变频无级调速
进料部分自动纠偏

MAIN SPECIFICATION 主要技术参数

Model	型号	ZSB-550
Maximum width	最大宽幅	550mm
Minimum width	最小宽幅	100mm
Weight	整机重量	450kg
Speed	速度	0-30m/min
Power	功率	0.75KW
Voltage	电源	220V/50HZ
Dimensions (LxWxH)	外形尺寸	1920×1180×980mm



QYP-700

Flattening Machine 压平机



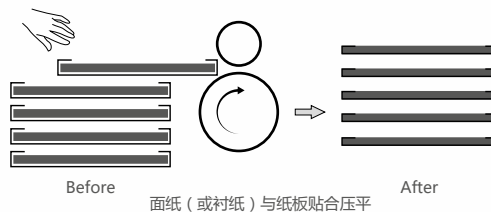
Making the laminated book cover more adhesion, surface flat and exhaust the bubbles to reach the nice appearance of product. 将已成型的精装封面书表面压平整，消除气泡，达到表面美观的目的。

MAIN FEATURES 性能特点

The machine can adjust the pressing pressure according to the board thickness. 可根据纸板厚度调节压力

MAIN SPECIFICATION 主要技术参数

Model	型号	QYP-700	ZYP-700
Folding width	压平宽幅	700mm	700mm
Weight	整机重量	95kg	120kg
Speed	速度	30m/min	0-35m/min
Power	功率	0.37kw	0.37kw



ZYP-700

Flattening Machine 压平机

